



EST 2004
ElliotLee

EST 2004
ElliotLee

9 Georgian Court, Wembley - HA9 6QG

Guide Price £850,000



9 Georgian Court

Wembley

- BEAUTIFUL SEMI DETACHED HOUSE
- SPACIOUS OPEN PLAN LIVING AND KITCHEN AREA
- MODERN KITCHEN WITH ISLAND AND INTEGRATED APPLIANCES
- FOUR SPACIOUS BEDROOMS
- TWO CONTEMPORARY BATHROOMS AND DOWNSTAIRS W/C
- LARGE WINDOWS FOR ABUNDANT NATURAL LIGHT THROUGHOUT
- BI-FOLD DOORS LEADING TO LANDSCAPED REAR GARDEN
- WALKING DISTANCE FROM OAKINGTON MANOR PRIMARY SCHOOL
- NEAR WEMBLEY STADIUM
- CLOSE TO STONEBRIDGE PARK TRAIN STATION

Stunning 4-bed, 2-bath semi-detached house. Modern interior, spacious rooms, sleek kitchen, luxurious bathrooms, impressive garden with patio. Ideal for families or professionals.

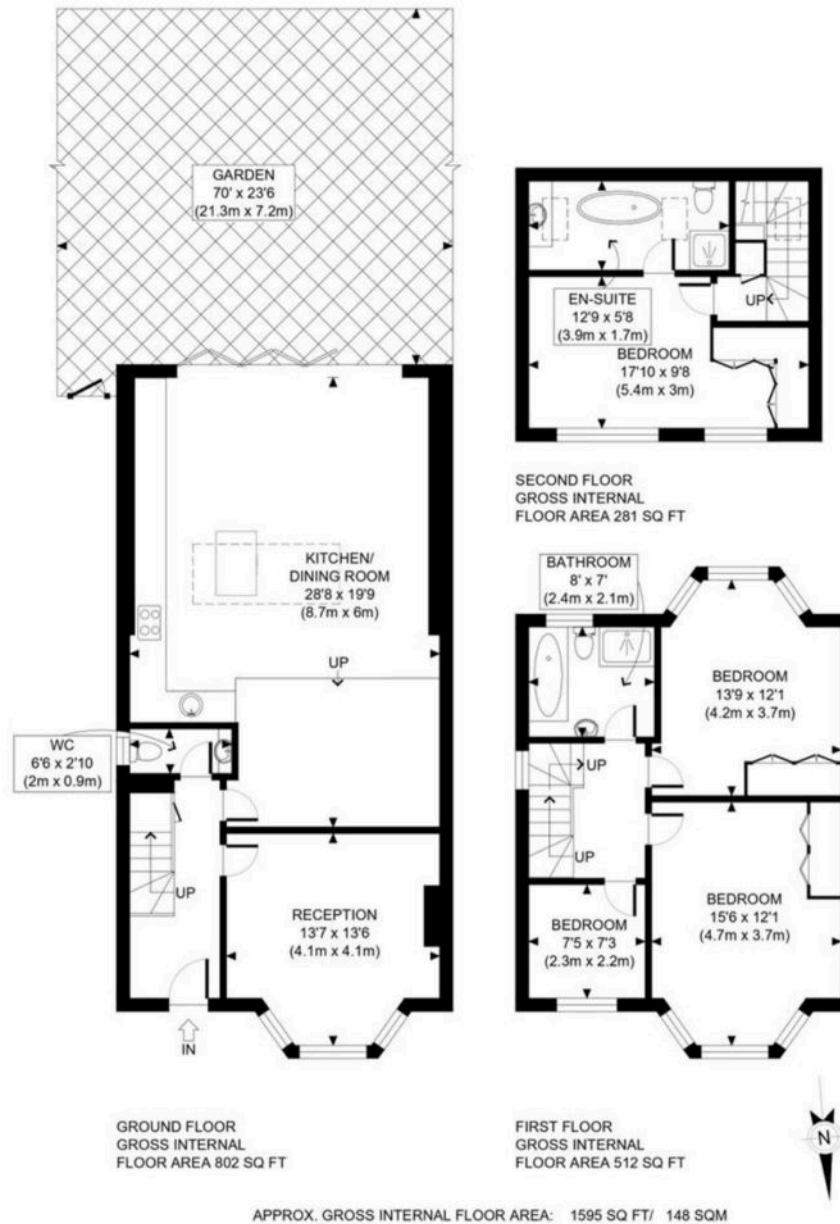
Council Tax band: D

Tenure: Freehold

EPC Energy Efficiency Rating: C

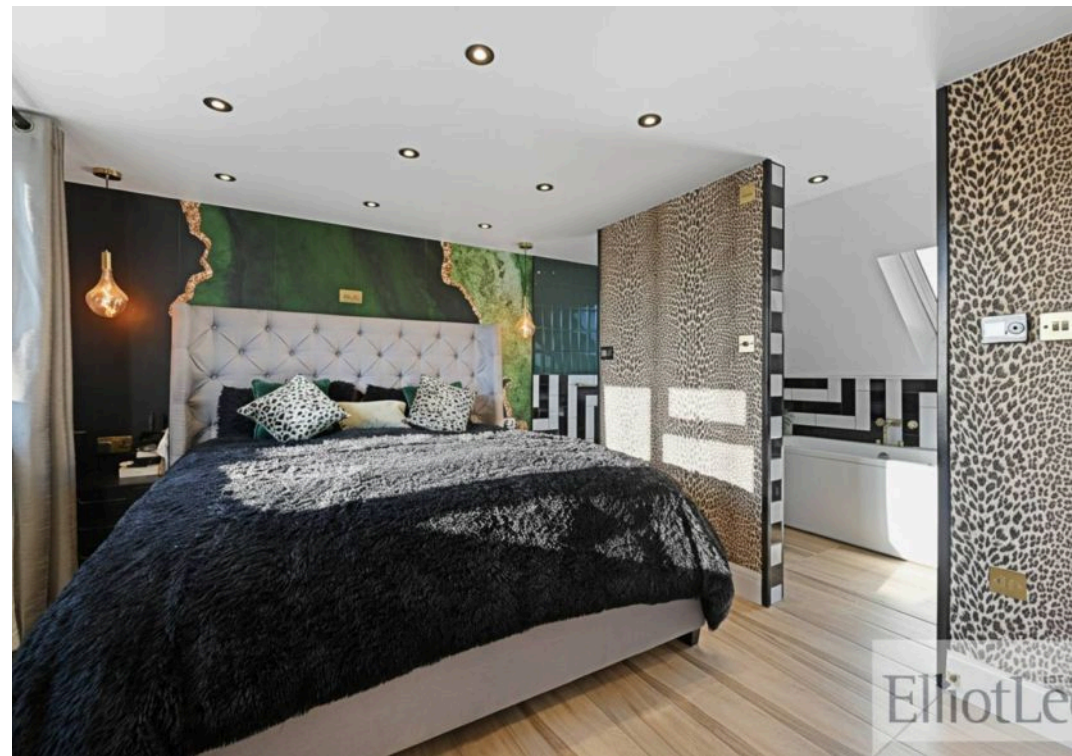
EPC Environmental Impact Rating: G





EST 2004
ElliotLee

This plan is for illustrative purposes only and should be used as such by any prospective client. Whilst every attempt has been made to ensure the accuracy of the Floor Plan contained here, measurements of the doors, windows, rooms and any other items are approximate and no responsibility is taken for any errors, omissions, or misstatement. The services, systems and appliances shown have not been tested and no guarantee as to the operability or efficiency can be given.



You can include any text here. The text can be modified upon generating your brochure.

STAY CONNECTED WITH US FOR EXCLUSIVE ACCESS TO UPCOMING HOMES

WE ARE LAUNCHING SELECTED PROPERTIES PRIVATELY ACROSS OUR SOCIAL PLATFORMS BEFORE THEY REACH THE OPEN MARKET.
FOLLOW US TO VIEW EARLY PREVIEWS, REGISTER YOUR INTEREST AND SECURE OPPORTUNITIES AHEAD OF WIDER RELEASE.

FOLLOW US ON



INSTAGRAM

FOLLOW US ON



FACEBOOK

#BeforeThePortals





ElliotLee

Head Office, 319 Rayners Lane, Pinner - HA5 5EH

020 8904 0409 • sales@elliotlee.co.uk • www.elliotlee.co.uk/