



**EST 2004**  
**ElliotLee**

**25 Romney Drive, Harrow - HA2 7EQ**  
Offers Over **£680,000**



## 25 Romney Drive

Harrow, Harrow

\*\*\*PURCHASE WITH RESERVATION AGREEMENT\*\*\*

ElliotLee is pleased to offer this delightful four-bedroom extended semi-detached house, located on a quiet road in North Harrow and only a short distance to excellent transport links, amenities and good schools. This property consists of an entrance hall, two receptions, a modern fitted kitchen, a utility room including a downstairs w/c.

Upstairs there are three double bedrooms, one single bedroom, a family bathroom with separate w/c.

Benefits also include a garage accessible from the utility room, a driveway, a well-maintained large rear garden, gas central heating and double glazing.

Contact ElliotLee for viewing arrangements.

These particulars are set out as a general outline only for guidance and do not constitute any part of an offer or contract. Details are given without any responsibility.

Council Tax band: F

Tenure: Freehold

EPC Energy Efficiency Rating: D

EPC Environmental Impact Rating: E

- RESERVATION AGREEMENT AVAILABLE
- SEMI DETACHED
- FOUR BEDROOMS
- POTENTIAL TO EXTEND
- TWO RECEPTIONS
- DOWNSTAIRS W/C
- LARGE REAR GARDEN
- GARAGE
- CLOSE TO LOCAL AMENITIES
- PUBLIC TRANSPORT LINKS



# ROMNEY DRIVE HARROW HA2



**GROUND FLOOR**

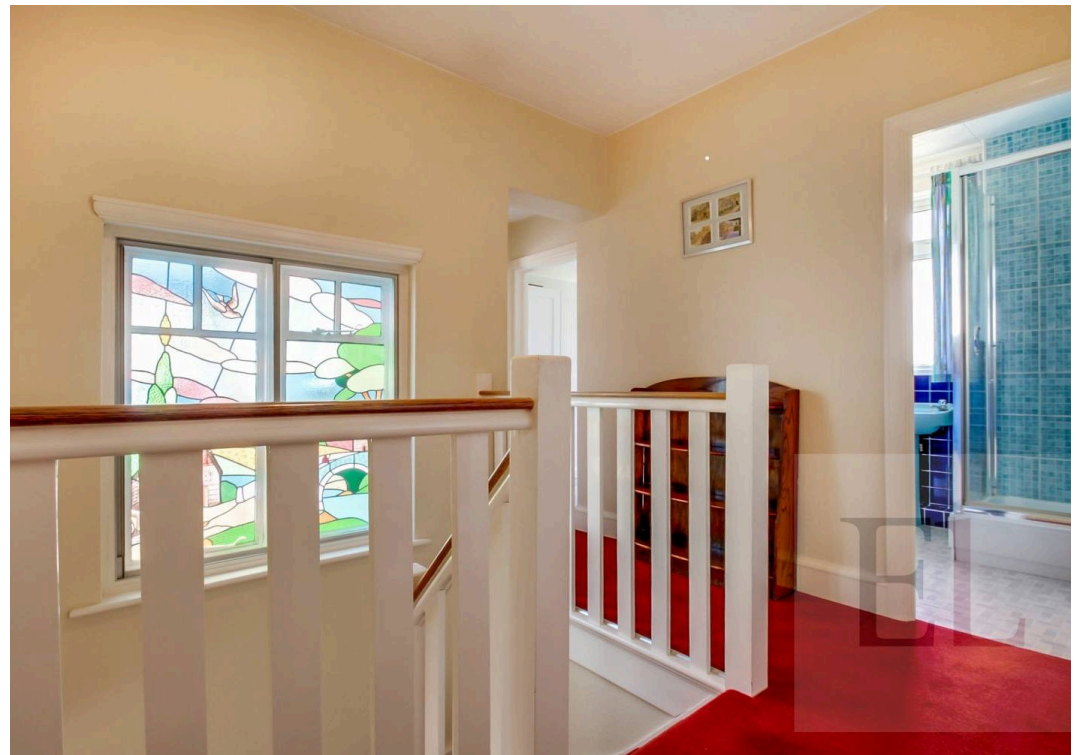


**FIRST FLOOR**

APPROX. GROSS INTERNAL FLOOR AREA 1206.95 SQ. FT / 112.13 SQ. M

APPROX. GROSS INTERNAL FLOOR AREA INCLUDING THE GARAGE 1327.51 SQ. FT / 123.33 SQ. M

WHILST EVERY ATTEMPT HAS BEEN MADE TO ENSURE THE ACCURACY OF THE FLOOR PLAN CONTAINED HERE, MEASUREMENTS OF DOORS, WINDOWS, ROOMS AND ANY OTHER ITEMS ARE APPROXIMATE AND NO RESPONSIBILITY IS TAKEN FOR ANY ERROR, OMISSION, OR MIS-STATEMENT. THIS PLAN IS FOR ILLUSTRATIVE PURPOSES ONLY AND SHOULD BE USED AS SUCH, BY ANY PROSPECTIVE PURCHASER.  
FLOOR PLANS ARE NOT DONE TO "SCALE".





**ElliotLee**

Elliotlee, 319 Rayners Lane - HA5 5EH

020 8866 0006 • [admin@elliottlee.co.uk](mailto:admin@elliottlee.co.uk) • [www.elliottlee.co.uk/](http://www.elliottlee.co.uk/)